

MONTHLY MEMBERSHIP PROGRESS REPORT

LOCATION INDIA

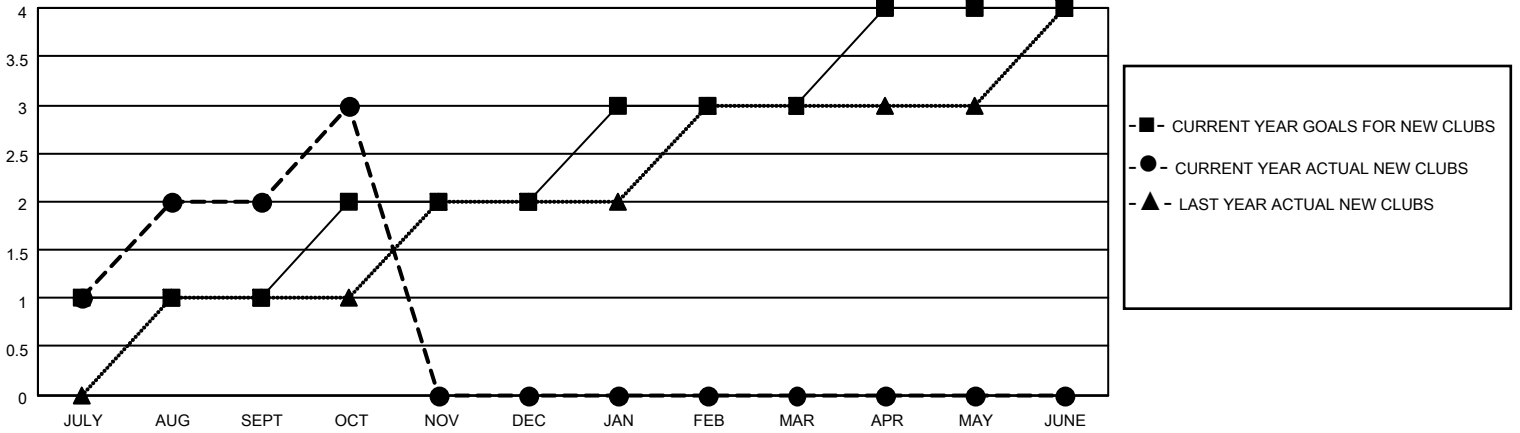
District 320 C

Results as of: 10/31/2020

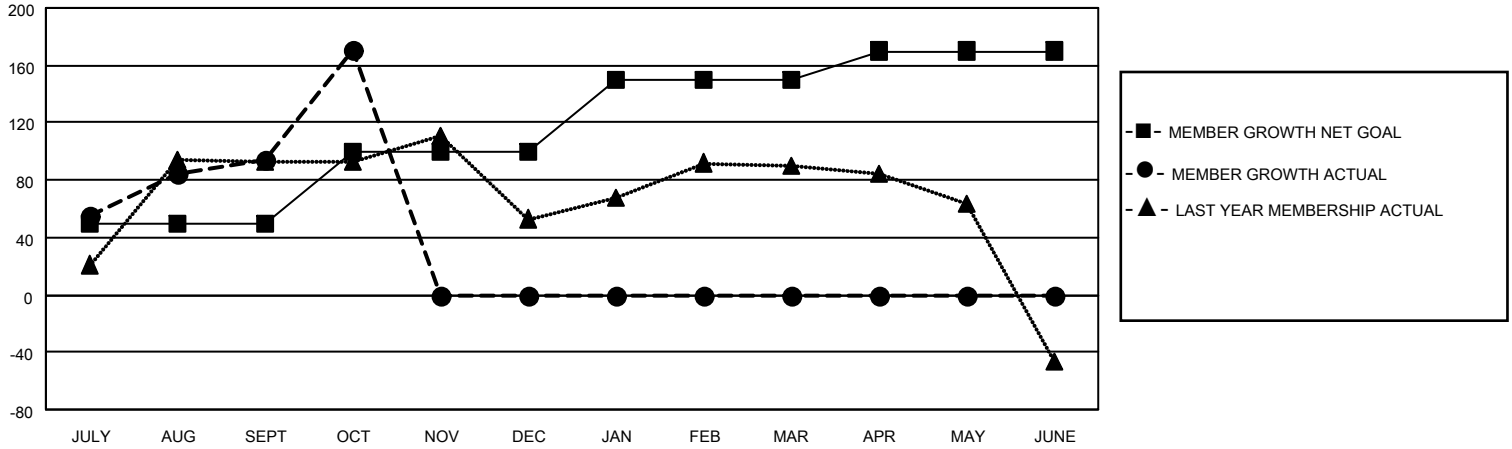
Clubs			
RESULTS FOR 2020-2021			
QUARTER	NEW CLUB GOAL	NEW CLUBS	DROPPED CLUBS
JULY/AUG/SEPT	1	2	0
OCT/NOV/DEC	1	1	0
JAN/FEB/MAR	1	0	0
APR/MAY/JUNE	1	0	0

Members			
RESULTS FOR 2020-2021			
QUARTER	MEMBER GROWTH NET GOAL	MEMBER GROWTH ACTUAL	DROPPED MEMBERS ACTUAL (including transfers)
JULY/AUG/SEPT	50	153	49
OCT/NOV/DEC	50	79	2
JAN/FEB/MAR	50	0	0
APR/MAY/JUNE	20	0	0

GOALS AND ACTUAL NEW CLUBS CUMULATIVE



GOALS AND ACTUAL MEMBERS CUMULATIVE



DROPPED CLUBS: 0	27 CLUBS OF 58 ADDED 1 OR MORE NEW MEMBERS	<u>GENDER DISTRIBUTION</u>
<u>DROPPED MEMBERS</u>		MALE 1,580 (71.40%)
DECEASED 6		FEMALE 633 (28.60%)
CLUB CANCELLED 0	CLICK HERE FOR CUMULATIVE MEMBERSHIP DATA	TOTAL FAMILY UNIT MEMBERS 1,338
OTHER 45		FAMILY MEMBERS PAYING HALF DUES 722
TOTAL 51		